

# PROVA ESCRITA MODELO DE FORMAÇÃO MUSICAL

Admissão/Aferição ao 11º ANO/7º GRAU (Folha do Professor)

## 1. Ditados rítmicos

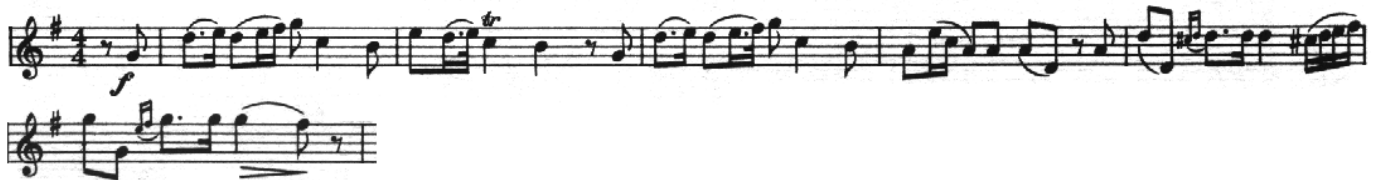
a. a uma parte com mudança de compasso

Cotação: 32 pontos



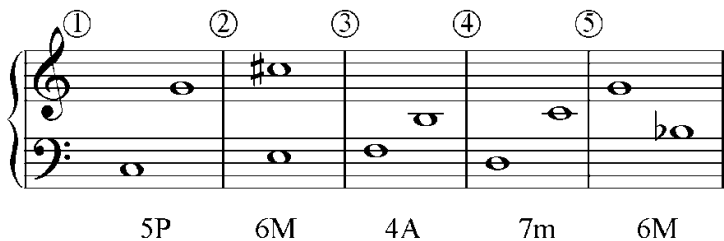
b. com notas dadas

Cotação: 18 pontos



## 2. Ditados de intervalos

Cotação: 20 pontos



## 3. Ditado atonal

Cotação: 50 pontos



#### 4. Identificação auditiva de acordes

Cotação: 20 pontos

Musical notation showing five chords in treble clef, numbered 1 to 5. Chord 1 is G major (G4, B4, D5). Chord 2 is F major (F4, A4, C5). Chord 3 is E minor (E4, G4, B4). Chord 4 is D major (D4, F4, A4). Chord 5 is C major (C4, E4, G4). Below the staff, the following labels are present: #, 7m, +, #, 7m.

#### 5. Ditado polifónico a duas vozes (Baixo + Soprano) tocado a quatro

Cotação: 60 pontos

*Verleih'uns Frieden - J. S. Bach (1685-1750)*

Musical notation for a four-part setting of 'Verleih'uns Frieden' by J. S. Bach. The score is written for Soprano and Bass voices, with each voice part having its own staff. The key signature is one flat (B-flat) and the time signature is common time (C). The music consists of four measures, each containing a full chord for both voices. The notes are: Measure 1: Soprano (G4, B4, D5), Bass (G3, B3, D4); Measure 2: Soprano (F4, A4, C5), Bass (F3, A3, C4); Measure 3: Soprano (E4, G4, B4), Bass (E3, G3, B3); Measure 4: Soprano (D4, F4, A4), Bass (D3, F3, A3).



#### 4. Identificação auditiva de acordes

Cotação: 20 pontos

1	2	3	4	5

#### 5. Ditado polifônico a duas vozes (Baixo + Soprano) tocado a quatro

Cotação: 60 pontos

*Verleih'uns Frieden - J. S. Bach (1685-1750)*

The image shows a musical score for the piece 'Verleih'uns Frieden' by J.S. Bach. It consists of two staves, Soprano (top) and Bass (bottom), in a common time signature (C). The key signature has two flats (B-flat and E-flat). The score is written in a polyphonic style, with each staff containing multiple voices. The notation includes various note values, rests, and accidentals. There are also some markings above and below the staves, possibly indicating phrasing or breath marks.